

Macalloy Stainless Cable Systems

Technical Data

STAINLESS CABLE CAPACITIES FOR 1 X 19 STRAND										
Cable Dia. (mm)	4	6	8	10	12	14	16	19	22	26*
Fork Thread	M10	M10	M12	M16	M20	M24	M24	M30	M30	M36
Min. Break Load (kN)	13.2	29.7	49.4	77.2	104	131	176	233	299	416
Nominal Cable Weight (kg/m)	0.08	0.18	0.32	0.50	0.71	0.97	1.27	1.76	2.36	3.30

*1 x 37 Strand or 1 x 61 Strand may also be offered.

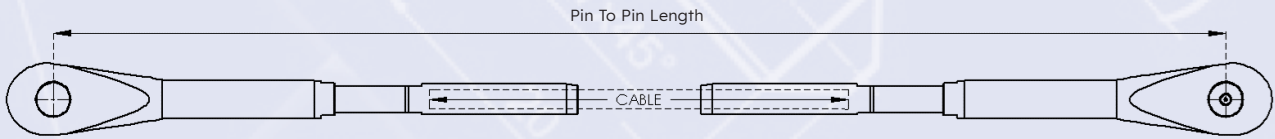
STAINLESS CABLE CAPACITIES FOR 7 X 19 STRAND											
Cable Dia. (mm)	4	6	8	10	12	14	16	18*	20*	22*	24*
Fork Thread	M10	M10	M12	M16	M20	M24	M24	M30	M30	M30	M36
Min. Break Load (kN)	10.2	23.1	41	64.1	92.3	125.6	164	204	252	305	363
Nominal Cable Weight (kg/m)	0.06	0.14	0.24	0.38	0.55	0.75	0.98	1.33	1.64	1.98	2.36

*6 x 36 + IWRC Strand may also be offered.

STAINLESS CABLE CAPACITIES FOR COMPACT STRAND							
Cable Dia. (mm)	4	6	8	10	12	14	16
Fork Thread	M10	M10	M12	M16	M20	M24	M24
Min. Break Load (kN)	17.4	35.2	61.7	98	143.1	194.1	253.9
Nominal Cable Weight (kg/m)	0.09	0.21	0.37	0.57	0.82	1.15	1.5

Stainless steel cable will begin to distort at around 50% of its breaking load. For this reason it is recommended to apply a factor of safety of 2 and not to load the cables to more than 50% of their breaking loads.

SWAGED ADJUSTABLE FORK (CAD) SYSTEM

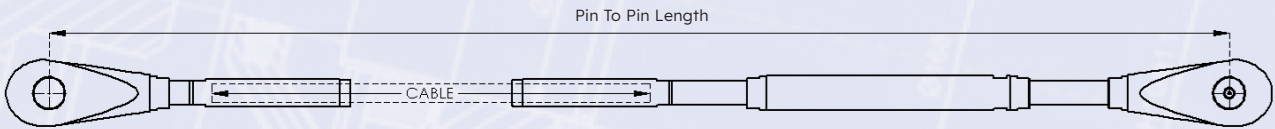


Side A: Swaged Adjustable Fork

Side B: Swaged Adjustable Fork

Cable Dia. (mm)	Fork	Min. Pin to Pin Length (mm)
4	M10	585
6	M10	658
8	M12	862
10	M16	1088
12	M20	1226
14	M24	1454
16	M24	1454
19	M30	2060
22	M30	2060
26	M36	2474

SWAGED TENSIONER SYSTEM

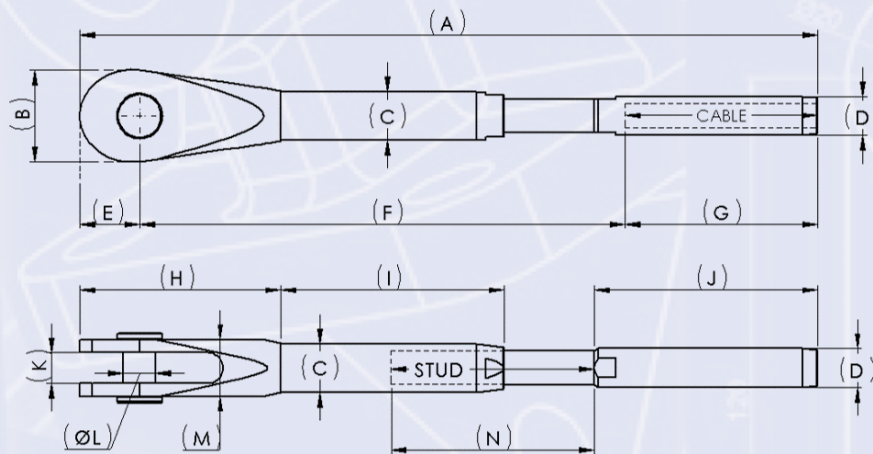


Side A: Swaged Fork

Side B: Swaged Tensioner

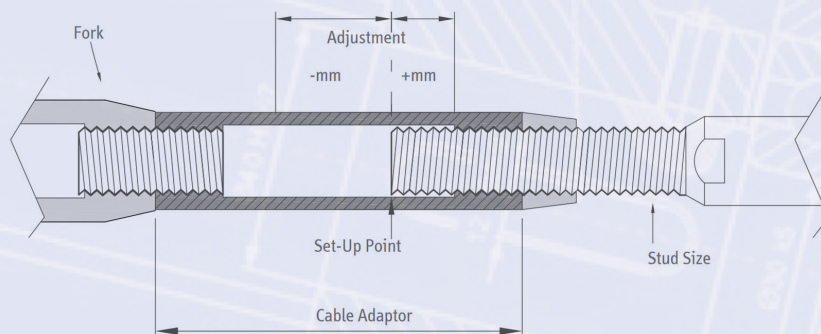
Cable Dia. (mm)	Fork	Min. Pin to Pin Length (mm)
4	M10	640
6	M10	656
8	M12	865
10	M16	1072
12	M20	1213
14	M24	1479
16	M24	1479
19	M30	2117
22	M30	2118
26	M36	2486

SWAGED ADJUSTABLE FORK



Cable Dia. (mm)	FORK	A	B	ØC	ØD	E	F	G	H	I	J	K	ØL	M	N
4	M10	182.5	30	17	7.5	18	117.5	47	63	52	53.5	11	10.5	19	40
6	M10	234	30	17	12.5	18	154	62	63	70	73	11	10.5	21	64
8	M12	283	34	19	16.1	22	181	80	75	84	95	12	12	21	71
10	M16	373	45	25	17.8	29	244	100	99	111	115	15	16	27	103
12	M20	442	53	28	21.4	34	288	120	122	130	138	19	20	36	116
14	M24	530	64	34	24.9	42	352	136	148	159	156	24	24	43	146
16	M24	538	64	34	28.1	42	352	144	148	159	164	24	24	43	146
19	M30	654	81	43	34.5	53	430	171	178	198	198	26	29	49	180
22	M30	670	81	43	40.3	53	430	187	178	198	214	26	29	49	180
26	M36	769	93	51	45.9	61	487	221	204	237	251	34	35	63	196

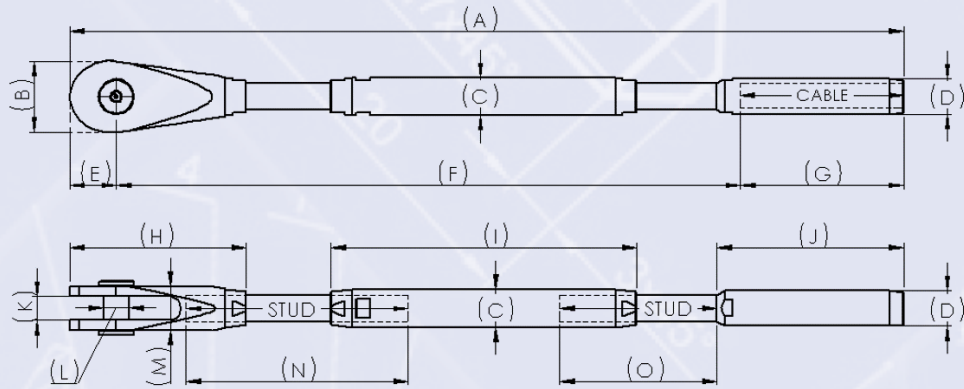
SWAGED ADJUSTABLE FORK - ADJUSTMENT



Cable Dia. (mm)	4	6	8	10	12	14	16	19	22	26
Fork Thread	M10	M10	M12	M16	M20	M24	M24	M30*	M30*	M36*
Swaged Fork Adjustment '+' (mm)	9	14	16	21	24	30	30	38	38	45
Swaged Fork Adjustment '-' (mm)	18	16	32	43	48	62	62	76	76	90
Set-Up Point (mm)	18	28	32	42	48	60	60	76	76	90

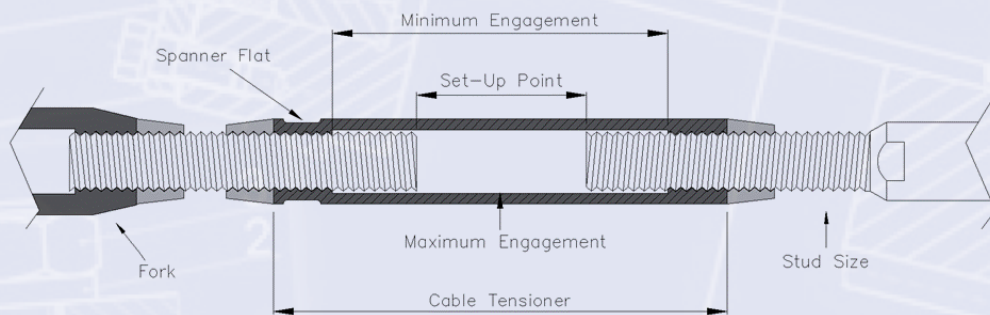
*For the adjustment for the larger diameters of 7 x 19 strand please default to the Fork Thread for reference.

SWAGED TENSIONER



Cable Dia. (mm)	FORK	A	B	ØC	ØD	E	F	G	H	I	J	K	ØL	M	N	O
4	M10	290.5	30	17	7.5	18	225.5	47	71	106	53.5	11	10.5	19	81	40
6	M10	308	30	17	12.5	18	228	62	71	106	73	11	10.5	21	81	64
8	M12	374	34	19	16.1	22	272	80	85	124	95	12	12	21	95	71
10	M16	485	45	25	17.8	29	356	100	112	162	115	15	16	27	128	103
12	M20	575	53	29	21.4	34	421	120	138	190	138	19	20	36	151	116
14	M24	739	64	35	24.9	42	561	136	167	268	156	24	24	43	199	146
16	M24	747	64	35	28.1	42	561	144	167	268	164	24	24	43	199	146
19	M30	939	81	43	34.5	53	715	171	202	350	198	26	29	49	254	180
22	M30	955	81	43	40.3	53	715	187	202	350	214	26	29	49	254	180
26	M36	1038	93	52	45.9	61	756	221	233	360	251	34	35	63	273	196

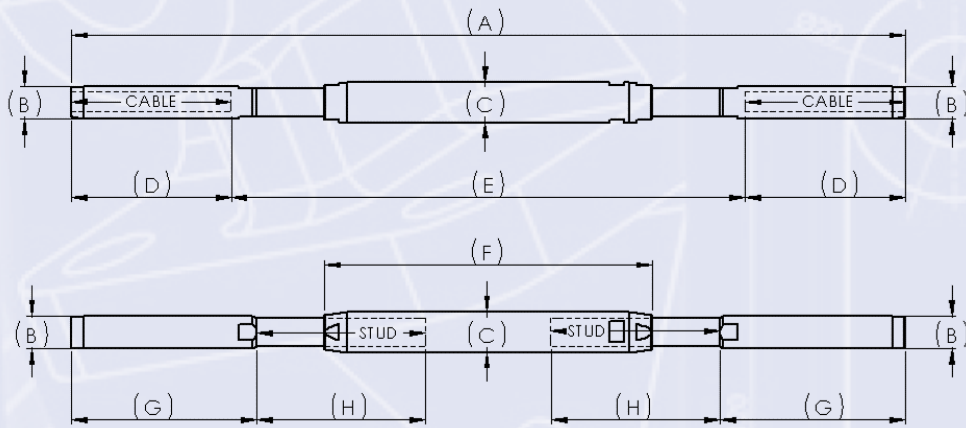
SWAGED TENSIONER - ADJUSTMENT



Cable Dia. (mm)	4	6	8	10	12	14	16	19	22	26
Fork Thread	M10	M10	M12	M16	M20	M24	M24	M30*	M30*	M36*
Swaged Tensioner Adjustment '+' (mm)	2	28	24	40	40	56	56	68	68	62
Swaged Tensioner Adjustment '-' (mm)	36	42	56	64	78	126	126	174	174	168
Set-Up Point (mm)	68	42	56	64	78	126	126	174	174	168

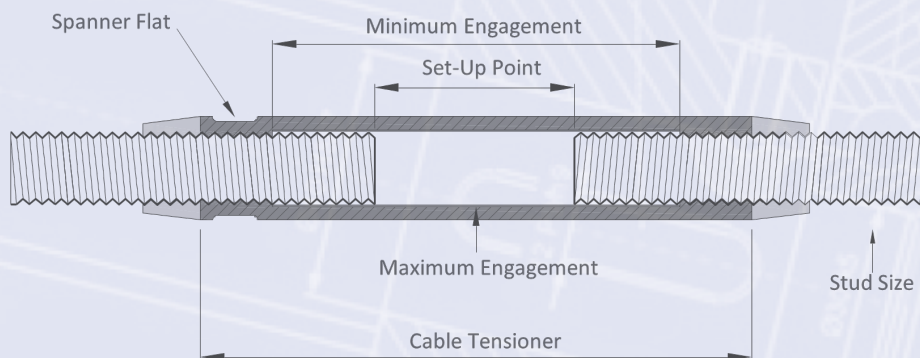
*For the adjustment for the larger diameters of 7 x 19 strand please default to the Fork Thread for reference.

INLINE TENSIONER



Cable Dia. (mm)	FORK	A	ØB	ØC	D	E	F	G	H
4	M10	230	7.5	17	47	136	106	53.5	40
6	M10	317	12.5	17	62	193	106	73	64
8	M12	390	16.1	19	80	230	124	95	71
10	M16	509	17.8	25	100	309	162	115	103
12	M20	595	21.4	29	120	355	190	138	116
14	M24	710	24.9	35	136	438	268	156	146
16	M24	746	28.1	35	144	458	268	164	146
19	M30	891	34.5	43	171	549	350	198	180
22	M30	952	40.3	43	187	578	350	214	180
26	M36	1058	45.9	52	221	616	360	251	196

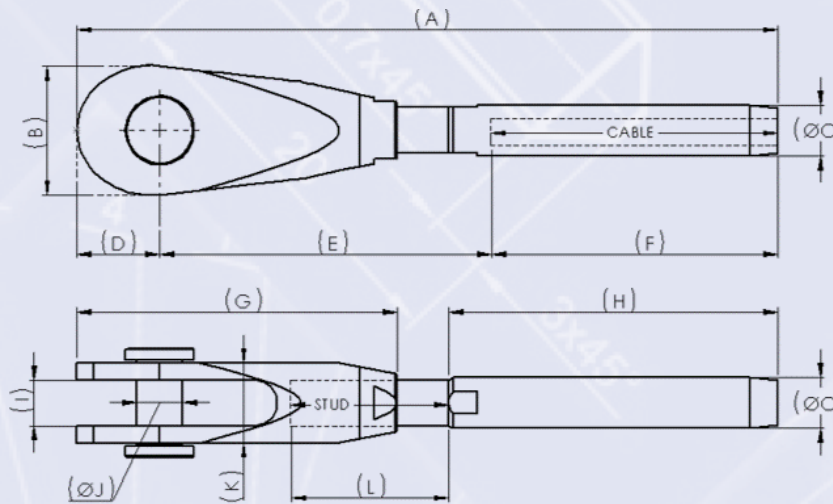
INLINE TENSIONER - ADJUSTMENT



Cable Dia. (mm)	4	6	8	10	12	14	16	19	22	26
Fork Thread	M10	M10	M12	M16	M20	M24	M24	M30*	M30*	M36*
Inline Tensioner Adjustment '+' (mm)	2	28	24	40	40	56	56	68	68	62
Inline Tensioner Adjustment '-' (mm)	68	42	56	64	78	126	126	174	174	168
Set-Up Point (mm)	68	42	56	64	78	126	126	174	174	168

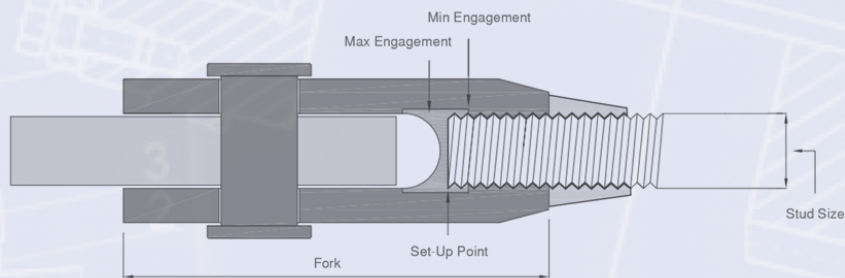
*For the adjustment for the larger diameters of 7 x 19 strand please default to the Fork Thread for reference.

SWAGED FORK



Cable Dia. (mm)	FORK	A	B	ØC	D	E	F	G	H	I	ØJ	K	L
4	M10	129.5	30	7.5	18	64.5	47	71	53.5	11	10.5	19	28
6	M10	158	30	12.5	18	78	62	71	73	11	10.5	21	37
8	M12	195	34	16.1	22	93	80	85	95	12	12	21	43
10	M16	245	45	17.8	29	116	100	112	115	15	16	27	55
12	M20	295	53	21.4	34	141	120	138	137	19	20	36	66
14	M24	345	64	24.9	42	167	136	167	156	24	24	43	77
16	M24	353	64	28.1	42	167	144	167	164	24	24	43	77
19	M30	425	81	34.5	53	201	171	202	198	26	29	49	94
22	M30	442	81	40.3	53	202	187	202	215	26	29	49	94
26	M36	512	93	45.9	61	230	221	233	251	34	35	63	111

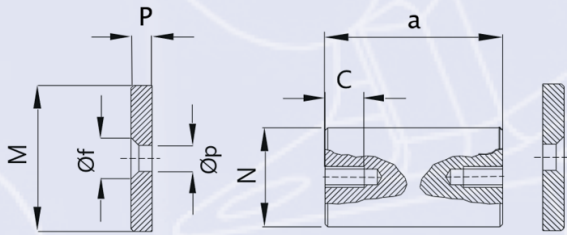
SWAGED FORK - ADJUSTMENT



Cable Dia. (mm)	4	6	8	10	12	14	16	19	22	26
Fork Thread	M10	M10	M12	M16	M20	M24	M24	M30*	M30*	M36*
Swaged Fork Adjustment '+' (mm)	5	5	6	8	10	12	12	15	15	18
Swaged Fork Adjustment '-' (mm)	5	5	6	8	10	12	12	15	15	18
Set-Up Point (mm)	5	5	6	8	10	12	12	15	15	18

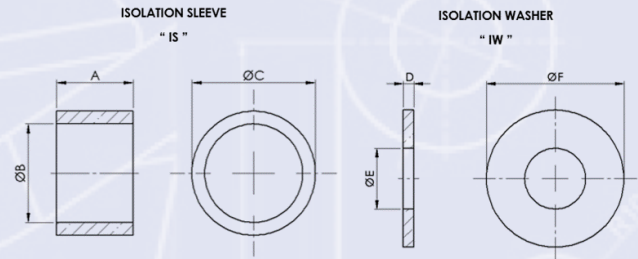
*For the adjustment for the larger diameters of 7 x 19 strand please default to the Fork Thread for reference.

PIN SET

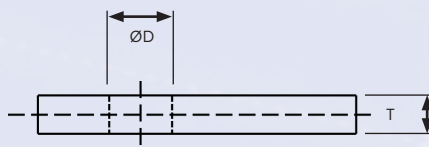
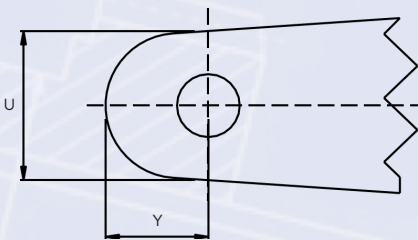


Thread	M10	M12	M16	M20	M24	M30	M36
Screw Length	10	10	10	16	16	16	16
a (mm)	22	24	30	39	46	52	66
C (mm)	7	7	7	12	12	12	12
Øf	9	9	11.2	13.4	13.4	13.4	13.4
M (mm)	15	18	24	28	31	40	45
N (mm)	10.5	12	16	20	24	29	35
P (mm)	4	4	4	5	5	5	5
Øp	4.5	4.5	5.5	6.5	6.5	6.5	6.5

ISOLATION SLEEVE AND WASHER



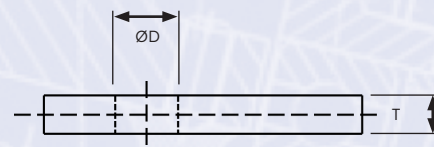
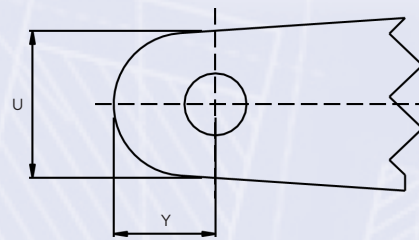
Thread	M10	M12	M16	M20	M24	M30	M36
A (mm)	9	10	13	16	21	23	31
ØB (mm)	11.5	13	17	21	25	31	37
ØC (mm)	14.5	16	20	24.5	29	35	41
D	0.5	0.5	0.5	1	1	1	1
ØE (mm)	11.5	13	17	21	25	31	37
ØF (mm)	26	30	41	46	57	74	83



GUSSET PLATE

Thread	M10	M12	M16	M20	M24	M30	M36
T (mm)	10	10	12	15	20	22	30
ØD (mm)	11.5	13	17	21.5	25.5	31.5	37.5
U (mm)	28	34	48	60	68	90	103
Y (mm)	19	22	30	37	43	56	64

If connecting to a stainless connection plate where no isolation is required, please use the above table.

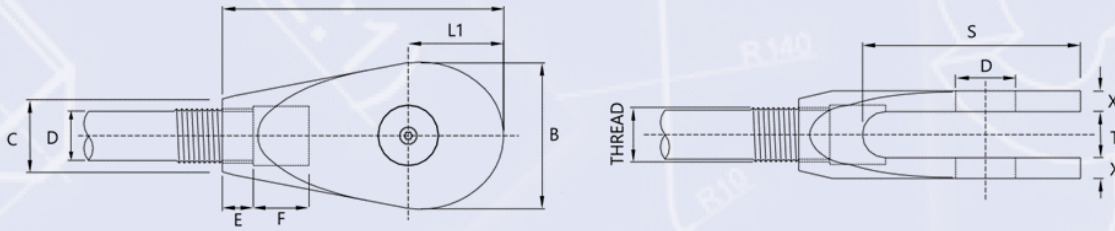


GUSSET PLATE WHEN USED WITH ISOLATION

Thread	M10	M12	M16	M20	M24	M30	M36
T (mm)	10	10	12	15	20	22	30
ØD (mm)	15.5	17	21	25.5	30	36	42
U (mm)	34	40	53	65	75	96	109
Y (mm)	20	23	31	38	44	57	65

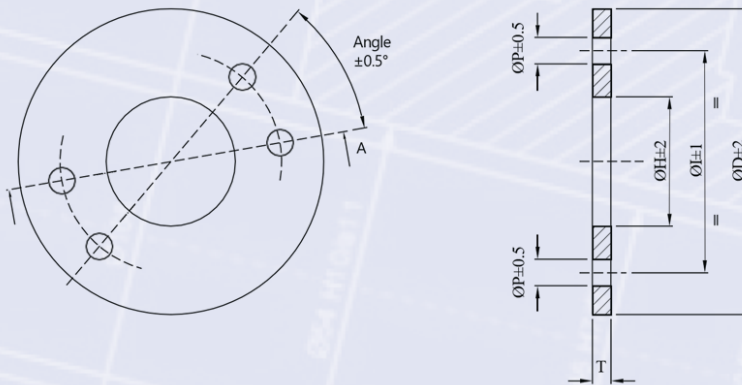
The above dimensions should be used when connecting stainless forks to a carbon steel connection plate. This then allows space for isolation sleeves and washers.

FORK



Thread	M10	M12	M16	M20	M24	M30	M36
L (mm)	63	75	99	122	148	178	204
B (mm)	30	34	45	53	64	81	93
C (mm)	17	19	25	29	35	44	52
E (mm)	12	14	18	24	27	32	38
F (mm)	8	10	14	16	22	28	34
T (mm)	11	12	15	19	24	26	34
D (mm)	11.5	13	17	21.5	25.5	31.5	37.5
S (mm)	46	54	70	85	104	127	148
X (mm)	4	4.5	6	8.5	9.5	11.5	14.5
L1 (mm)	18	22	29	34	42	53	61

CONNECTION DISC



Thread	M10	M12	M16	M20	M24	M30	M36
ØI	96	120	160	180	210	280	320
ØP	11.5	13	17	21.5	25.5	31.5	37.5
T	10	10	12	15	20	22	30
ØD	130	164	218	249	294	386	444
ØH	50	70	90	105	115	160	185



Macalloy 100 years 1921-2021

For further information call +44 (0)1909 519200
email sales@macalloy.com or visit macalloy.com

Caxton Way, Dinnington, Sheffield, S25 3QE, U.K.